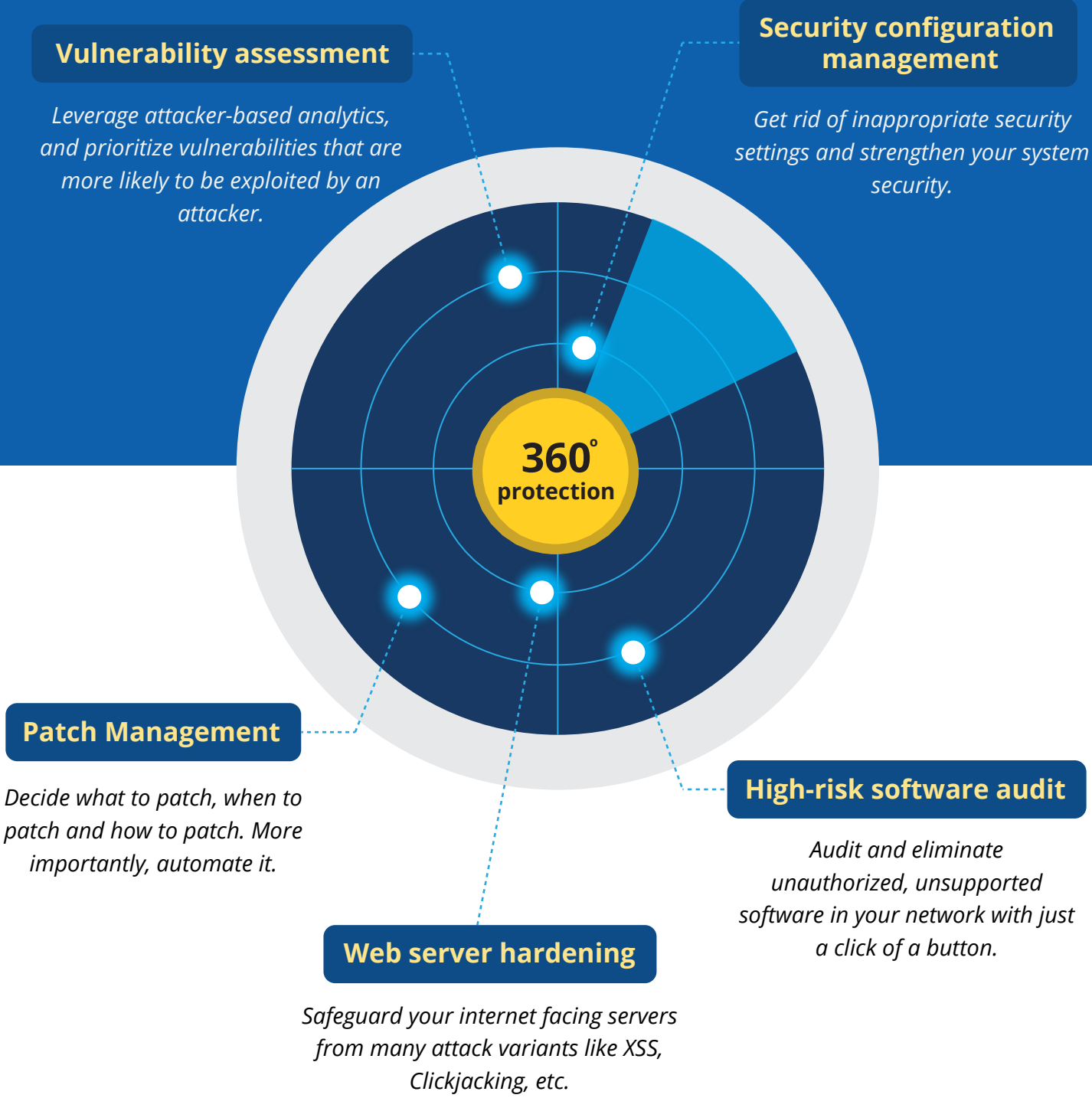


Reduce your attack surface with proactive vulnerability management



Today's challenge

Lack of awareness and the absence of a centralized way to facilitate cyber-hygiene have made many organizations vulnerable to cyberattacks. On top of that, [25,226 vulnerabilities were disclosed in 2022 by NIST](#). With these numbers soaring, organizations need to implement a strategic approach for prioritizing and managing vulnerabilities, because not all vulnerabilities pose equal risk.

The Solution

ManageEngine Vulnerability Manager Plus is prioritization-focused vulnerability management software for enterprises, offering built-in patch management. It's a strategic solution for your security teams, delivering comprehensive visibility, assessment, and remediation of threats and vulnerabilities across all your IT assets—servers, desktops, laptops, network devices, virtual machines, DMZ servers, and roaming devices—from a single console.



Detects vulnerabilities in
800+
applications.



Supports
20
languages.



1st
ever vulnerability
management solution
with automated patching.



Scales to
50,000
computers.



Fully functional,
30-day
free trial.

How Vulnerability Manager Plus reinforces the security stance of your network

Vulnerability assessment

- ◆ Identify vulnerabilities along with their context, such as CVSS and severity scores, to ascertain priority, urgency, and impact.
- ◆ Stay aware of whether exploit code has been publicly disclosed for a vulnerability.
- ◆ Keep tabs on how long a vulnerability has resided in your network.
- ◆ Filter vulnerabilities based on impact type and patch availability.
- ◆ Gain recommendations on high-profile vulnerabilities procured based on above risk factors.
- ◆ Leverage a dedicated tab on publicly disclosed and zero-day vulnerabilities, and utilize work-arounds to mitigate them before the fixes arrive.
- ◆ Isolate and identify vulnerabilities in critical assets, namely databases and web servers that hold critical data and perform crucial business operations.

Security Configuration management

- ◆ Identify misconfigurations in operating systems, applications, and browsers, and bring them back to compliance.
- ◆ Audit your firewalls, antivirus, and BitLocker status.
- ◆ Prevent brute-force attempts by enforcing complex password, account lockout, and secure logon policies.
- ◆ Make sure memory protection settings, such as Structured Exception Handling Overwrite Protection, Data Execution Prevention, and Address Space Layout Randomization, are enabled.
- ◆ Put an end to legacy protocols with risks that outweigh the benefits.
- ◆ Manage share permissions, modify user account controls, and disable legacy protocols to reduce your attack surface.
- ◆ Safely alter security configurations without interrupting business operations by reviewing critical deployment warnings.

Agent Hardware Requirements

Processors	Processor Speed	RAM Size	Hard Disk Space
Intel Pentium	1.0 GHz	512 MB	100 MB

Server Hardware Requirements

Number of managed devices	Servers used	Processor	RAM	Hard disk space
1 to 250	Vulnerability Manager Plus Server	Intel Core i3 (2 core/4 thread) 2.0GHz 3MB cache	2GB	5GB
251 to 500	Vulnerability Manager Plus Server	Intel Core i3 (2 core/4 thread) 2.4GHz 3MB cache	4GB	10GB
501 to 1,000	Vulnerability Manager Plus Server	Intel Core i3 (2 core/4 thread) 2.9GHz 3MB cache	4GB	20GB
1,001 to 3,000	Vulnerability Manager Plus Server	Intel Core i5 (4 core/4 thread) 2.3GHz 6MB cache	8GB	30GB
3,001 to 5,000	Vulnerability Manager Plus Server	Intel Core i7 (6 core/12 thread) 3.2GHz 12MB cache	8GB	40GB
	SQL Server	Intel Core i7 (6 core/12 thread) 3.2GHz 12 MB cache	8GB	30GB
5,001 to 10,000	Vulnerability Manager Plus Server	Intel Xeon E5 (8 core/16 thread) 2.6GHz 20MB cache	16GB	60GB
	SQL Server	Intel Xeon E5 (8 core/16 thread) 2.6GHz 20MB cache	16GB	40GB
10,001 to 20,000	Vulnerability Manager Plus Server	Intel Xeon E5 (8 core/16 thread) 2.6GHz 40MB cache	32GB	120GB
	SQL Server	Intel Xeon E5 (12 core/24 thread) 2.7GHz 30MB cache	32GB	80GB

If you're managing more than 1,000 computers, we recommend you install Vulnerability Manager Plus on a Windows Server machine.

Software Requirements

Supported OS for Server
Windows 7 / 8 / 8.1 / 10 / 11 / Server 2003/ 2003 R2 / 2008 / 2008 R2 / 2012 / 2012 R2 / 2016 / 2019 / 2022

Supported OS for Agents

Windows OS	Windows Server OS	Mac OS	Linux OS
Windows 11	Windows server 2022	-	-
Windows 10	Windows server 2016	10.13	Ubuntu 10.04 & later versions
Windows 8.1	Windows server 2012 R2	10.12	Debian 7 & later versions
Windows 8	Windows server 2012	10.11	Cent OS 6 & 7
Windows 7	Windows server 2008 R2	10.10	Red Hat 6 & 7
Windows Vista	Windows server 2008	10.9	SuSE Enterprise Linux 11 & later versions
Windows XP	Windows server 2003 R2	10.8	Know the supported features for each Linux flavor
Conditional Support	Windows server 2003 R2	10.7	
	Conditional Support	10.6	

Pricing

- Free edition**
Complete vulnerability management for **20 workstations** and **5 servers**
- Professional edition**
Starts at **\$695/year** for **100 computers**.
- Enterprise edition**
Starts at **\$1,195/year** for **100 computers**.

For more details

www.vulnerabilitymanagerplus.com
vulnerabilitymanagerplus-support@manageengine.com
Toll free: **+1-888-720-9500**