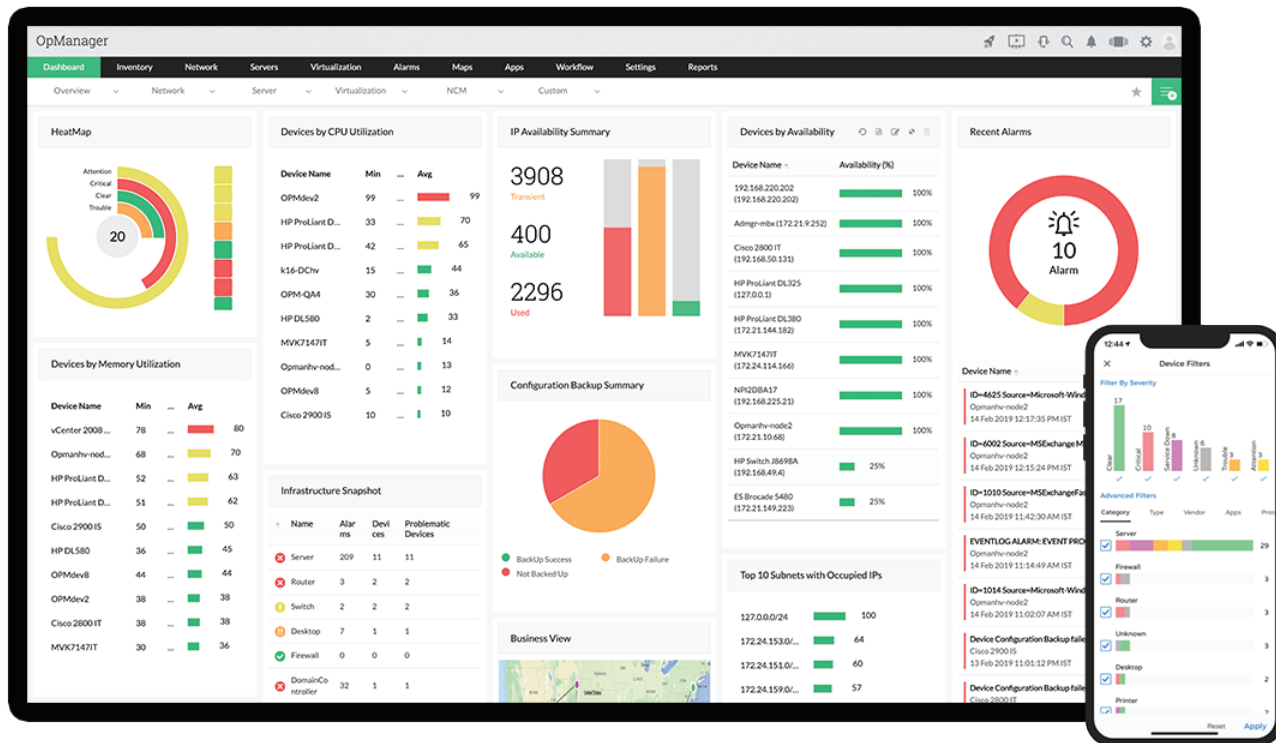


# DATASHEET

OpManager



**ManageEngine OpManager** is an enterprise-ready, affordable network monitoring solution that identifies network faults in real time. It helps you quickly troubleshoot network faults and maintain server uptime 24/7. It is 100 percent web based and can be set up in hours.



## Features

### Comprehensive monitoring

Monitor availability, health, and performance of your network devices such as switches, routers, servers, interfaces, firewalls, and other networking hardware for more than 2,000 metrics - all within OpManager.

### Support for Hybrid Networks

Monitor Microsoft Hyper-V, VMware, Citrix XenServer, Nutanix Infrastructure, Cisco UCS, and other essential applications such as Exchange, Active Directory, services, and processes for faults and performance.

### Manage multi-vendor hardware

With more than 53,000 vendor templates, monitor and manage hardware from vendors including the likes of Cisco, Juniper, Fortigate, Aruba, and many more. Customize templates to address your organization's unique needs.

## **Real time alerting**

Get real time alerts on network faults, identify performance issues early, and reduce MTTR.

## **Interactive Dashboards**

Get an overview of the health of your IT infrastructure with real time data on Key Performance Indicators (KPI). Customize dashboards with over 100 widgets to instantly see the information you need.

## **Easier Incident Identification**

With color codes and multi-level thresholds, easily identify network faults that are critical and take corrective actions.

## **Detailed Network Visualizations**

With custom Business Views, 3d Floor Views, Rack Views, and maps, visualize and monitor critical devices and their interfaces, and pinpoint network faults instantly.

## **Enhanced Fault Notifications**

Notify critical network faults to higher authority/other technicians via SMS, e-Mail, and e-Mail based SMS if they are not cleared in a preset time frame. Also, notify network faults via Slack channels, trouble tickets, and more for easier fault management.

## **Customize in minutes**

Customize monitoring thresholds for any metric and push the changes to multiple device templates/groups with Quick Configuration Wizard in just minutes.

## **Intelligent Automations**

Automate routine, laborious tasks by defining the conditions, as well as selecting the devices and commands with more than 70 workflow actions. Accelerate network discovery process by associating device templates, custom monitors, and classify devices automatically with Discovery Rule Engine.

## **Enterprise-grade scalability**

Monitor and manage up to 10k devices and 50k interfaces out of the box. With a centralized console, monitor multiple, remote branch offices in real time. Ensure high availability with Failover functionality and secure your network from disruptions 24/7.

## **REST API-based Integrations**

Using REST API, transfer data from OpManager to other ManageEngine products such as ServiceDesk Plus and AlarmsOne, and endless 3rd party tools.

## **On the go Monitoring**

Gain visibility into your IT infrastructure even when you are away from the desk. Monitor your IT in real-time while you are in a meeting, commuting, or taking a break with the OpManager iOS and Android mobile applications.

## **Add-ons & Plug-ins**

Apart from monitoring networking devices, you can now monitor application performance, analyze network traffic, track configuration changes, manage firewall policies, IP addresses, and switch ports within OpManager.

### **Applications Manager (Plug-in)**

With support for over 100 popular technologies across cloud applications, containers, application servers, databases, Applications Manager (Plug-in) proactively monitors business applications and ensures revenue-critical applications meet end user expectations.

### **NetFlow Analyzer (Add-on)**

Analyze network congestion and find out who/what is consuming the bandwidth. Monitor bandwidth usage by Top N users, Top N applications, Top N devices with flow technologies such as NetFlow, J-Flow, IPFIX, NetStream and AppFlow.

### **Firewall Analyzer (Add-on)**

Protect your network from trojans, malware by monitoring firewall logs, analyzing policy effectiveness, and managing firewall rules for increased network security.

### **Network Configuration Manager (Add-on)**

Track the who, when, and what of network configurations in real-time and ensure your network devices function in a desired state.

### **IPAM & SPM (Add-on)**

Manage your IP space effectively by continuous tracking. Find the available switch ports in real time by mapping occupied ports to corresponding devices. Simplify operations management task with many more troubleshooting tools.

# Editions

To better suit your monitoring needs, OpManager is now available in 3 editions.

Standard	Professional	Enterprise
<ul style="list-style-type: none"><li>● Network Discovery</li><li>● Server, switch, and interface Monitoring</li><li>● Syslog and Eventlog Monitoring</li><li>● File/Folder Monitoring</li><li>● Customizable Dashboard</li><li>● Business Views</li><li>● Alarm Escalation</li><li>● IOS &amp; Android mobile applications</li><li>● 3rd Party Integrations</li><li>● Scales up to <b>1,000 devices</b></li><li>● Starts @ <b>245 USD for 10 devices</b></li></ul>	<ul style="list-style-type: none"><li>● Everything in Standard Edition and</li><li>● Layer2 Discovery</li><li>● Discovery Rule Engine</li><li>● Virtual Environment monitoring</li><li>● URL, AD, Exchange Server, MS SQL</li><li>● Monitoring</li><li>● REST API Access</li><li>● NOC View, Widgets</li><li>● IT Workflows</li><li>● Forecast Reports</li><li>● Multi-Language Support</li><li>● Scales up to <b>1,000 devices</b></li><li>● Starts @ <b>345 USD for 10 devices</b></li></ul>	<ul style="list-style-type: none"><li>● Everything in Professional Edition and</li><li>● Multi-site Monitoring</li><li>● Up to 180 days data maintenance</li><li>● Failover Support</li><li>● Scales up to <b>10,000 devices</b> out of the box</li><li>● Starts @ <b>11,545 USD for 250 devices</b></li></ul>

### Minimum System Requirements

To manage up to 1k devices.

**CPU** : Intel Xeon Quad Core, 2.5 Ghz  
**Ram Size** : 16 GB  
**Hard Disk** : 40 GB

**OS Windows** : Windows 11/10/8/7. Windows Server 2022/2012 R2/ 2012/2008 R2/2008.  
**OS Linux** : Ubuntu, Red Hat, Suse, Fedora and Mandriva (Mandrake Linux)  
**Database** : MSSQL 2008, 2012, 2014 and 2016 | OpManager bundled PostgreSQL

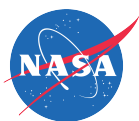
### Minimum System Requirements

To manage up to 50k interfaces or 10k devices.

**CPU** : Intel Xeon Quad Core, 3.5GHz  
**Ram Size** : 32 GB  
**Hard Disk** : 100 GB

**OS Windows** : Windows 11/10/8/7. Windows Server 2022/2012 R2/ 2012/2008 R2/2008.  
**OS Linux** : Ubuntu, Red Hat, Suse, Fedora and Mandriva (Mandrake Linux)  
**Database** : MSSQL 2008, 2012, 2014 and 2016 | OpManager bundled PostgreSQL

For detailed system requirements, click [here](#).



#### Telephone Number

Call Toll free : +1 888 720 9500

#### Alternate number

US:+1 888 791 1189 | Intl:+1 925 924 9500 | Aus: 1800 631 268  
UK: 0800 028 6590 | CN:+86 400 660 8680

#### Mail

opmanager-support@manageengine.com.